

SIMONSWERK

BAKA®

hinge G 1/160

for rebated timber door leaves

hinge

Technical details

knuckle length	160,0 mm
h x b frame leaf	80,0 x 57,0 mm
hole / pin diameter	5,0 mm
material thickness	2,75 mm
h x b door leaf	80,0 x 57,0 mm
pin diameter	11,0 mm

Note

Equipped with fixed pin and offset hinge leaves, for mortising, with nail holes.

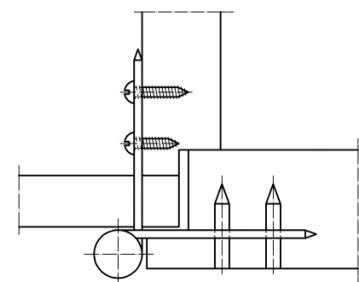
Please consider DIN reference.

Items (DIN reference: DIN left hand)

Finish(es)	galvanised
packing unit	pack of 10
item number	5 130571 2 01006

Items (DIN reference: DIN right hand)

Finish(es)	galvanised
packing unit	pack of 10
item number	5 130571 1 01006



cross section