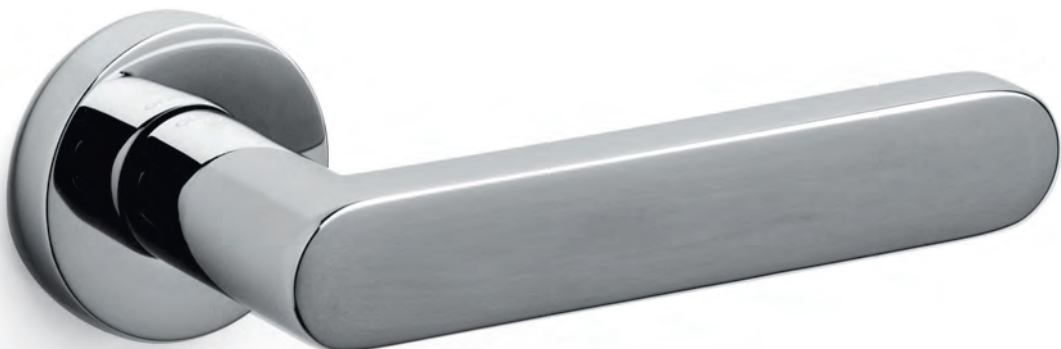


# Link

Piero Lissoni 2006



M200



C200

K200

ottone/brass



EL biocromo lucido/biochrome bright



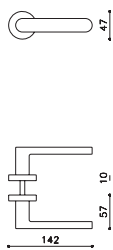
IS superinox sat./superstainlesssteel satin



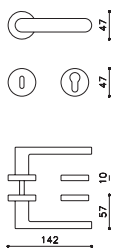
CO cromato opaco/mat chrome



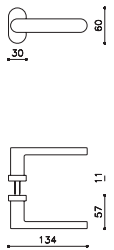
US superantracite sat./superanthracite satin



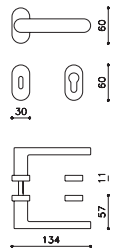
M200RSB8



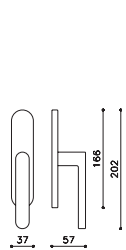
M200RB8  
M200RY8



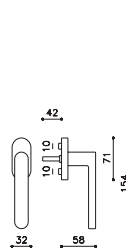
M200VSB8



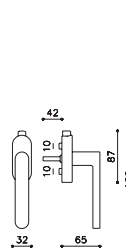
M200VB8  
M200VY8



C200



K200



K200P