

Product line 02 RSk

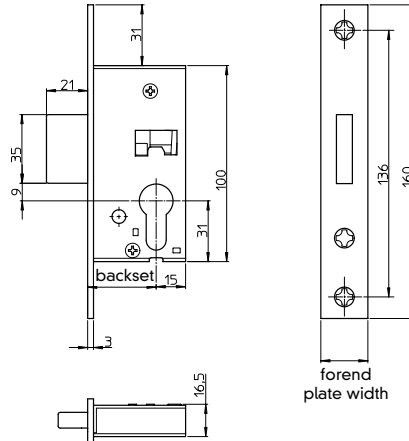
Mortice dead lock

according to DIN 18251-2

Class 3

for hollow profile section doors

Dead bolt protection 21 mm



Classification code according to EN 12 209										
3	-	5	0	0	C	3	B	A	0	0

Lock for hollow profile section doors **RR**

Product line 02 **02**

mortice dead lock **RSk**

flat square cornered forend plate **FK**

forend plate width
- 16 / 24 mm **24**

backset sizes
- 35 / 40 / 45 mm **35**

forend plate design
- steel satin chromated **MC**

Equipment:

- lock cased closed at the top and bottom
- bolt nickel-plated
- through furniture bore hole above the lock follower
- sleeved bolt through fixing points

Options:

- forend plate material non-corroding stainless steel precision ground
- forend plate width 20 / 22 mm
- backset 25 / 30 / 50 mm
- U forend plate 24 x 6 mm incl. end caps for backset 29 / 34 / 39 / 44 mm
- bolt 5 mm projecting (up to diameter 45 mm)
- customized forend plate inscription

Example for article identification

RR 02 RSk FK 24 / 35 MC